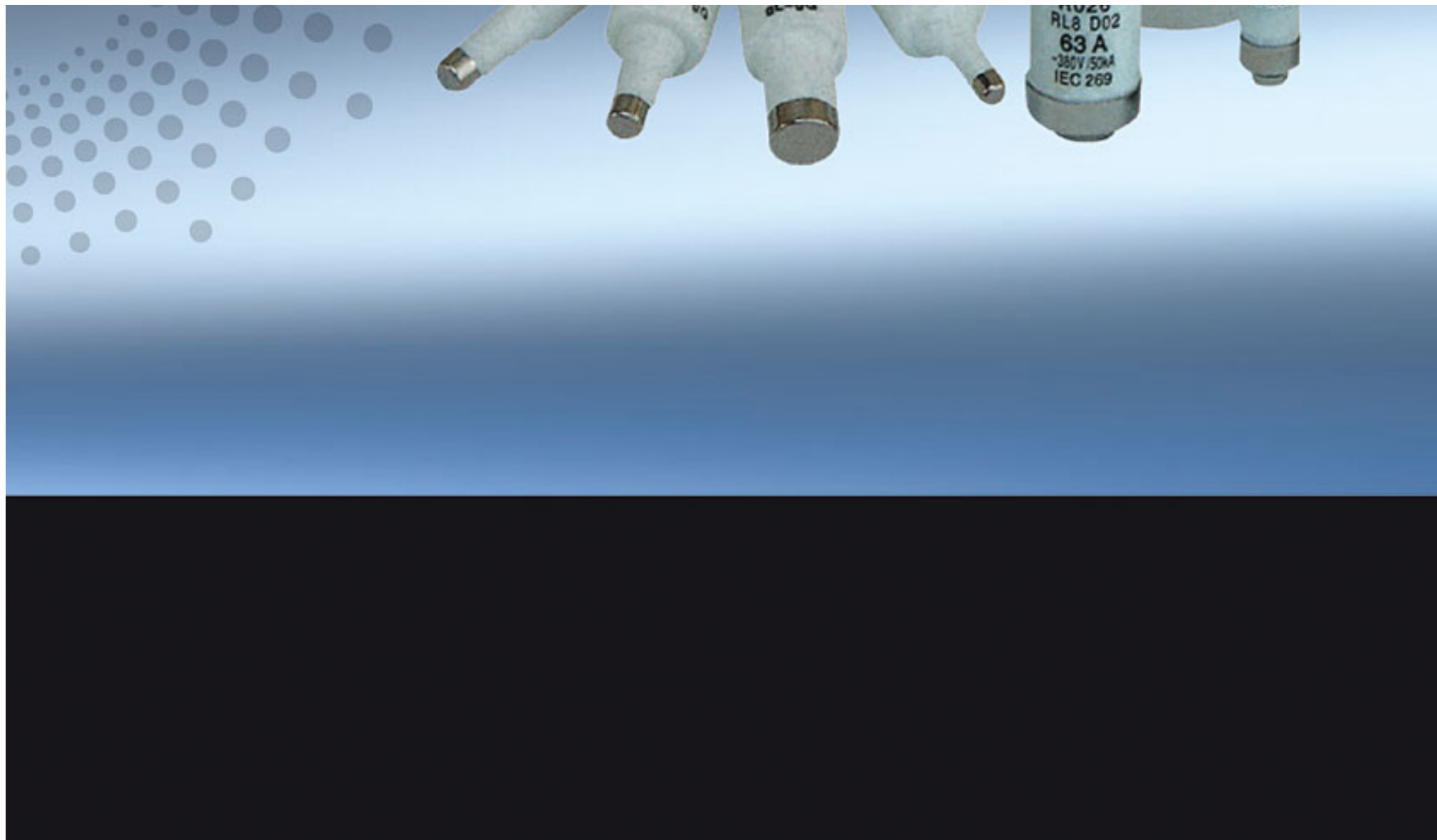


## Screw base type fuse links

### Screw Base Type Fuse Links





TIRH TECHNOLOGY  
www.chinatirh.com

**TiRH**

## ▣ Applications

Protection against overload and short-circuit in electric lines(type gG), also available for protection of semiconductor parts and equipments against short-circuit ( type aR) and protection of motors (type aM).

Rated voltage up to 1140V; Rated current up to 630A;

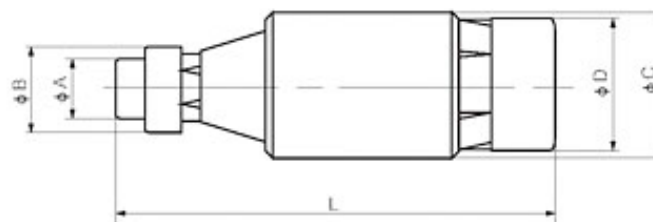
Working frequency 50Hz AC; Rated breaking capacity up to 50KA.Compliant with GB13539 and IEC60269.

## Design Features

Variable cross-section fuse element made from pure metal sealed in cartridge made from high-duty ceramic. Fuse tube filled with chemically treated high-purity quartz sand as arc-extinguishing medium. Indicator springs out when fuse cuts to give caution.

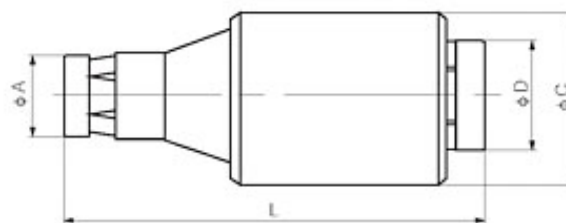
## Basic Data

The model, outline dimension, rated voltage and rated current are shown in Figures 6.1–6.2 and Table.



Drawing 6.1

No .	Model of fuse link				Size	Rated voltage (V)	Rated current (A)	Weight (g)	Drawing No .	Overall dimension (mm)				
	The company		Domestic and oversea similar products							phi A	phi B	phi C	phi D	L
	General (gG)	Quick speed (aR)	General (gG)	Quick speed (aR)										
0601	RO26	RS26	E14 RL8 5SE E18	-	D01	400	2-6	12.7	6.1	5	7.3	10.6	10	36
							10	6.1	5	8.5	10.6	10	36	
							16	6.1	5	9.7	10.6	10	36	
					D02	400	13.8	20	6.1	8.5	11	15	14	36
								25	6.1	8.5	12	15	14	36
								35	6.1	8.5	13.3	15	14	36
								50	6.1	8.5	14.5	15	14	36
								63	6.1	8.5	16	15	14	36
								80	6.1	17	22	22	21	43
					D03	400	15.6	100	6.1	17	25	22	21	43

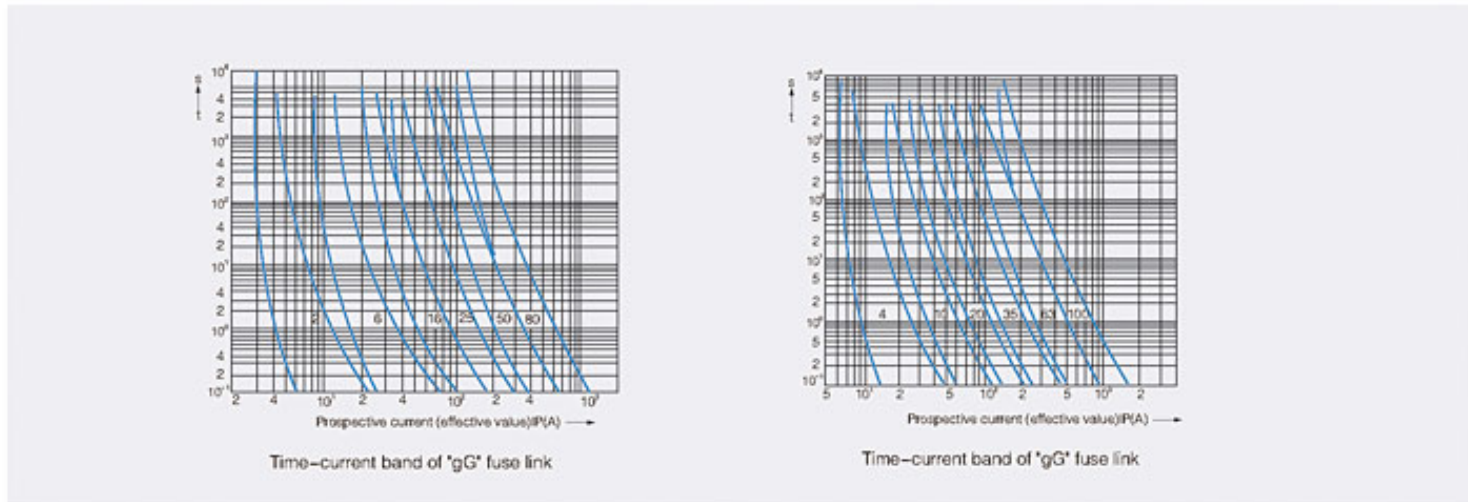


Drawing 6.2

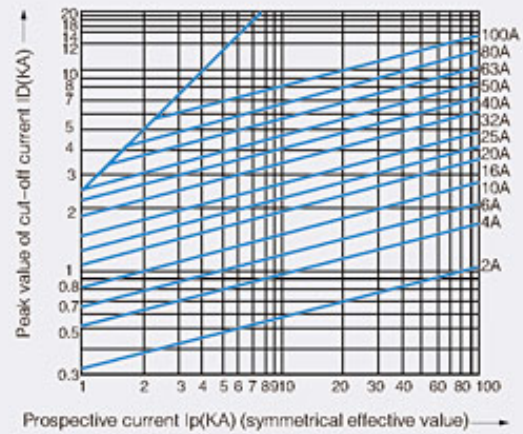
No .	Model of fuse link				Size	Rated voltage (V)	Rated current (A)	Weight (g)	Drawing No .	Overall dimension (mm)			
	The company		Domestic and oversea similar products							φ A	φ C	φ D	L
	General (gG)	Quick speed (aR)	General (gG)	Quick speed (aR)									
0602	RO21	RS21	5SB E27 RL6-25	5SD	D II	500	2~6	24.8	6.2	6	22	13	50
							8~10	24.8	6.2	8	22	13	50
							13	24.8	6.2	8	22	15	50
							16	24.8	6.2	10	22	15	50
							20	24.8	6.2	12	22	15	50
							25	24.8	6.2	14	22	15	50
0603	RO22	RS22	5SB E33 RL6-63	5SD	D II	500	30~40	48.1	6.2	16	27	20	50
							50	48.1	6.2	18	27	20	50

0604	RO23	RS23	-	-	D II	500	63	48.1	6.2	20	27	20	50
							2~6	64	6.2	6	27	20	70
							8~10	64	6.2	8	27	20	70
							16	64	6.2	10	27	20	70
							20	64	6.2	12	27	20	70
							25	64	6.2	14	27	20	70
							35	64	6.2	16	27	20	70
							50	64	6.2	18	27	20	70
							63	64	6.2	20	27	20	70
0605	RO24	RS24	E16 5SA	-	-	500	2~6	11.7	6.2	6	12.5	11.3	50
							10	11.7	6.2	8	12.5	11.3	50
							16	11.7	6.2	10	12.5	11.3	50
							20~25	11.7	6.2	12	12.5	11.3	50
							3~10	13.1	6.2	8	12.5	11.5	50
0606	RO27	RS27	BLA	BLC	-	600	3~10	13.1	6.2	8	12.5	11.5	50
0607	RO28	RS28	BLA	BLC	-	600	15~20	14.5	6.2	10	12.5	11.5	50
0608	RO29	RS29	BLA	BLC	-	600	25~40	16.4	6.2	14	12.5	11.5	50

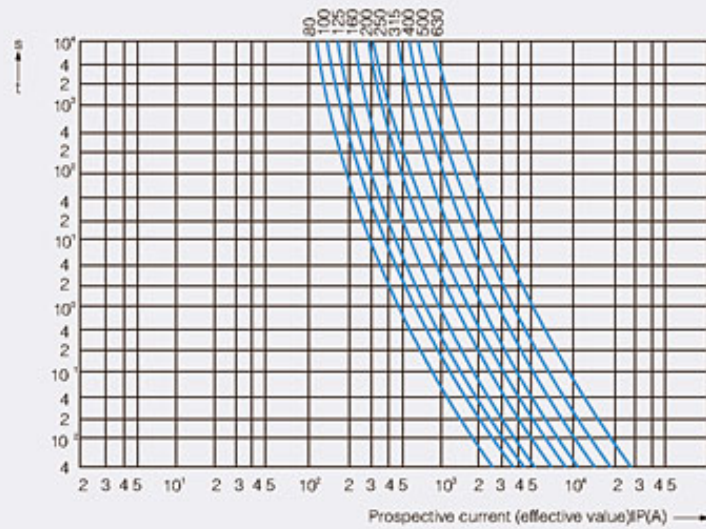
## Characteristic Curve



# Characteristic Curve

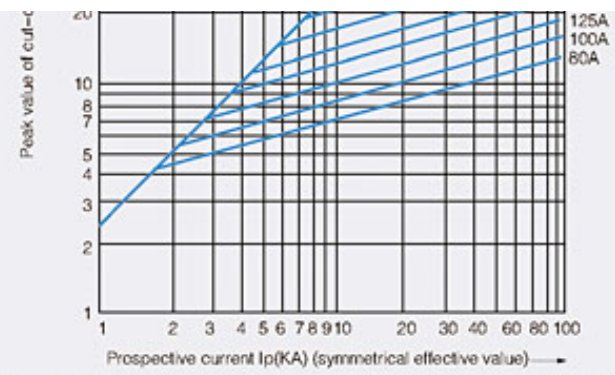


Characteristic of cut-off current of "gG" fuse link



"RO201~203" Time-current band of "gG" fuse link





'RO201~203' Characteristic curve of cut-off current of 'gG' fuse link