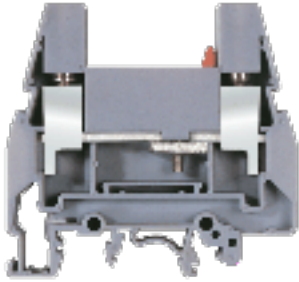


Rail Mounted Terminal Blocks : Polyamide Range Of Terminals : Disconnecting Terminal : KUTD 10



<b>Type of Connection</b>	Brass Screw Clamp
<b>Insulating Material</b>	Polyamide 66
<b>Terminal Pitch</b>	8 mm ( 0.31 Inch)
<b>Terminal Width</b>	61 mm ( 2.38 Inch)
<b>Terminal Height</b>	57.5 mm ( 2.24 Inch)
<b>Rated Cross Section</b>	10 sq mm
<b>Wire Stripping Length</b>	11 mm
<b>Screw Size</b>	M4



**Connection Possibility**

<b>Stranded wire</b>	Max : 10 sq mm	Min : 1.5 sq mm
<b>Solid wire</b>	Max : 16 sq mm	Min : 1.5 sq mm

Ratings	IEC	UL
Voltage	630 V	600 V
Current	61 A	65 A
Conductor Size	10 sq mm	Min : 10 AWG    Max : 6 AWG
Tightening Torque	1.2 Nm	13 Lbln

**Terminal Accessories**

<b>End Plate</b>	KPTD
<b>End Clamp</b>	SCUN, SCUSL, SCUDD, SCKN, DCKN
<b>Comb-type Shorting Link</b>	SLC6 - 2W
<b>Marking Label</b>	LABEL KN8
<b>Group Marking Carrier</b>	SCKNMLH, SCUNMLH, DCKNMLH
<b>Terminal Colours</b>	GREY, KHAKHI, RED, YELLOW, BLUE, BLACK, GREEN
<b>Mounting Channel</b>	CHS10, CHK10, CHS3, CHS5, CHK5, CHK3, CHKS3, CHKS5, CHKS10, CHKDS10, CHKD10