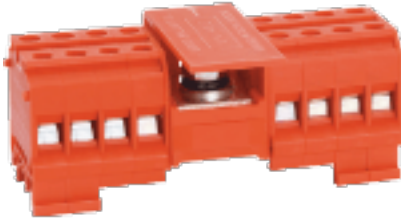


Rail Mounted Terminal Blocks : Polyamide Range Of Terminals : Distribution Block : DBK 1X8



Type of Connection	MS Screw Clamp
Insulating Material	Polyamide 66
Terminal Pitch	113 mm (4.41 Inch)
Terminal Width	67.5 mm (2.63 Inch)
Terminal Height	49.7 mm (1.94 Inch)
Rated Cross Section	[IC-35 , OG-10] sq mm
Wire Stripping Length	12 mm
Screw Size	M4



Connection Possibility

Stranded wire	Max : [IC-50 , OG-10] sq mm	Min : [IC-10 , OG-2.5] sq mm
Solid wire	Max : [IC-50 , OG-16] sq mm	Min : [IC-10 , OG-2.5] sq mm

Ratings	IEC	UL
Voltage	800 V	600 V
Current	[IC-114 , OG-57] A	[IC-130 , OG-130] A
Conductor Size	[IC-35 , OG-10] sq mm	Min : [IC-8 , OG-16] AWG Max : [IC-1 , OG-6] AWG
Tightening Torque	[IC-06 , OG-1.2] Nm	[IC-55 , OG-14] Lbln

Terminal Accessories

Partition Plate Without Foot	KBX
Partition Plate With Foot	KBXF
End Clamp	SCUN, SCUSL, SCUDD, SCKN, DCKN
Marking Label	LABEL KN10
Group Marking Carrier	SCKNMLH, SCUNMLH, DCKNMLH
Terminal Colours	GREY, KHAKHI, RED, YELLOW, BLUE, BLACK, GREEN
Mounting Channel	CHS10, CHK10, CHS3, CHS5, CHK5, CHK3, CHKS3, CHKS5, CHKS10, CHKDS10, CHKD10