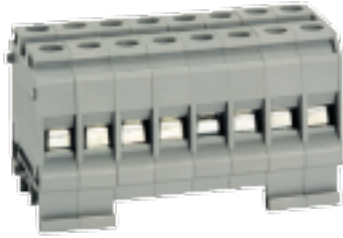


Rail Mounted Terminal Blocks : Polyamide Range Of Terminals : Distribution Block : DBK 8



|                              |                         |
|------------------------------|-------------------------|
| <b>Type of Connection</b>    | MS Screw Clamp          |
| <b>Insulating Material</b>   | Polyamide 66            |
| <b>Terminal Pitch</b>        | 82 mm ( 3.20 Inch)      |
| <b>Terminal Width</b>        | 42.5 mm ( 1.66 Inch)    |
| <b>Terminal Height</b>       | 46.5 mm ( 1.81 Inch)    |
| <b>Rated Cross Section</b>   | [ IC-10 , OG-10 ] sq mm |
| <b>Wire Stripping Length</b> | 12 mm                   |
| <b>Screw Size</b>            | M4                      |



**Connection Possibility**

|                      |                |                 |
|----------------------|----------------|-----------------|
| <b>Stranded wire</b> | Max : 10 sq mm | Min : 2.5 sq mm |
| <b>Solid wire</b>    | Max : 16 sq mm | Min : 2.5 sq mm |

| Ratings           | IEC                     | UL   |
|-------------------|-------------------------|--|
| Voltage           | 800 V                   | 600 V  |
| Current           | 57 A                    | 65 A   |
| Conductor Size    | [ IC-10 , OG-10 ] sq mm | Min : [ IC-16 , OG-16 ] AWG<br>Max : [ IC-6 , OG-6 ] AWG |
| Tightening Torque | 1.2 Nm                  | 14 Lbln  |

**Terminal Accessories**

|                                     |   |
|-------------------------------------|---|
| <b>Partition Plate Without Foot</b> | KBX   |
| <b>Partition Plate With Foot</b>    | KBXF  |
| <b>End Clamp</b>                    | SCUN, SCUSL, SCUDD, SCKN, DCKN  |
| <b>Marking Label</b>                | LABEL KN10  |
| <b>Group Marking Carrier</b>        | SCKNMLH, SCUNMLH, DCKNMLH   |
| <b>Terminal Colours</b>             | GREY, KHAKHI, RED, YELLOW, BLUE, BLACK, GREEN                               |
| <b>Mounting Channel</b>             | CHS10, CHK10, CHS3, CHS5, CHK5, CHK3, CHKS3, CHKS5, CHKS10, CHKDS10, CHKD10 |