



control solutions

**TERACOM**

# TCG120

## GSM-GPRS remote monitoring

# User manual

Version 1.2 / April, 2017



# GSM-GPRS Remote monitoring controller

## TCG120

### 1. Introduction

TCG120 is a GSM-GPRS remote monitoring controller for distributed IO monitoring and control. The controller has 2 digital inputs, 2 analog inputs, 1-Wire interface for up to 4 Teracom humidity and temperature sensors. It also has 2 relays with normally open and normally close contacts.

The relays can be activated either remotely (via SMS or HTTP API command) or locally - from status of monitored parameter. Only one parameter can manage the relay at the same time, but for every parameter can be sent e-mail or SMS for alert conditions.

TCG120 may periodically send data to a remote server, which makes it suitable for use in client-server monitoring and control systems.

### 2. Features

- Quad-bands connectivity;
- Setup via USB (Windows setup program) or SMS;
- 2 digital inputs with "dry contact" and "logic level" modes;
- 2 analog inputs with 0 to 60VDC range;
- 2 relays with NO and NC contacts;
- Long 1-Wire support for up to 4 Teracom TSTxxx (temperature) and TSHxxx (temperature&humidity) sensors;
- SMS alarm alerts (up to 5 numbers)
- Email alarm alerts (up to 5 email recipients), SMTP with TLS 1.0 support;
- Single call control – the relays can be controlled with a single call from up to 100 numbers;
- Push mode – XML data is sent via HTTP post method to remote server;
- HTTP API commands;
- Firmware update over USB or GPRS.

### 3. Applications

- **Remote control** – the relay outputs can be controlled with SMS, HTTP command or by a single call from authorized number.
- **Humidity and temperature control** – TCG120 supports Teracom TSTxxx (temperature) and TSHxxx (humidity and temperature) 1-wire sensors. The relay outputs can be controlled from the value of the measured parameters. The minimum, maximum and hysteresis values can be set during the initial setup (via USB) or by SMS.
- **Status reporter** – SMS and E-mail alerts can be sent to the authorized recipients. The alerts can be triggered if some of the measured parameters (temperature, humidity, analog inputs, digital inputs) is in alarm state.
- **SCADA systems** – TCG120 controller is designed for easy SCADA systems integration. Using PUSH function makes it possible to build systems where many controllers from different places are sending data to a remote server.

## 4. Technical parameters

Supply voltage, VDC	8 - 32
Maximum current consumption (with both relays ON), mA	140@12VDC
Weight, g	130
Dimensions, mm	107 x 72 x 32
Operating temperature, °C	0 to +40
Maximum humidity in 0 to 31°C range, %RH	80
Maximum humidity at 40°C (linear slope between 31-40°C), %RH	50
Quad band connectivity, MHz	850/900/1800/1900
GPRS Multi-slot Class	12, 1~12 configurable
GPRS Mobile Station	Class B
Compliant to GSM Phase 2/2+	Class 4 (2W@850/ 900MHz) Class 1 (1W@1800/1900MHz)
Minimum high level input voltage for digital inputs, VDC	+2.5
Maximum low level input voltage for digital inputs, VDC	+0.8
Maximum input voltage for digital inputs, VDC	+5.5
Supply voltage for 1-wire bus ( <b>VDD</b> ), VDC	5.0 ± 0.2
Maximum output current for 1-wire bus ( <b>VDD</b> ), A	0.2
Analog inputs range, VDC	0 to +60
Maximum switchable current for relay contacts, A	3
Maximum switchable voltage for relay contacts, VAC/VDC	30/24

## 5. LED indicators

The following indicators show the status of the controller:

- **REL1-REL2** (green) – these LEDs are illuminated whenever the corresponding relay is activated (the NO contact is closed and the NC contact is open);
- **SIG** (red) – this LED is used to indicate the GSM network signal level;
- **STA** (yellow) – indicates the working state of TCG120 controller and system messages.

The controller states and system messages are shown in **Appendix A**.

## 6. Installation

This device must be installed by qualified personnel. Installation consists of mounting the device, connecting to the GSM network, connecting inputs and outputs, providing power and configuring via a web browser. This device must not be installed directly outdoors.

**Attention! Before installing the SIM card in the card slot, please ensure that the PIN code is disabled.**

### 6.1. Mounting

TCG120 should be mounted in a clean and dry location on not flammable surface. Ventilation is recommended for installations where ambient air temperature is expected to be high.

Mount the device to a wall by using two plastic dowels 8x60mm (example Würth GmbH 0912 802 002) and two dowel screws 6x70mm (example Würth GmbH 0157 06 70). Attach the screws to the surface vertically. See Appendix-A, fig. 1 for mechanical details.

Maintain spacing from adjacent equipment. Allow 50 mm of space on all sides, as shown on fig.2 in **Appendix A**, this provides ventilation and electrical isolation.

### 6.2. Connectors

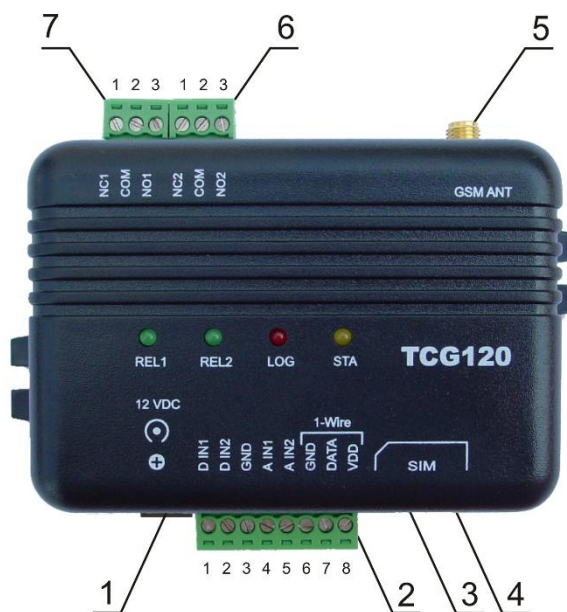
**Attention! Disconnect power supply before wiring.**

The correct wiring procedure is as follows:

- Make sure power is turned off;
- Make wiring connections to the terminals;
- Apply power.

It is recommended to test and configure TCG120 without any controlled device.

Make sure that wires are properly attached to the terminals and that the terminals are tighten. Not proper wiring and configuration can cause permanent damage of TCG120 or the equipment to which it is connected or both. Inputs and outputs locations are shown below:



- Connector 1** – Power - central positive
- Connector 2, Pin1** - Digital input 1 (**Din1**)\*
- Connector 2, Pin2** - Digital input 2 (**Din2**)\*
- Connector 2, Pin3** - Ground
- Connector 2, Pin4** - Analog input 1 (**Ain1**)
- Connector 2, Pin5** - Analog input 2 (**Ain2**)
- Connector 2, Pin6** - Ground
- Connector 2, Pin7** – 1-Wire data
- Connector 2, Pin8** – 1-Wire power supply
- Connector 3** – mini USB
- Connector 4** – SIM card holder
- Connector 5** – GSM Antenna
- Connector 6, Pin1** – NC Relay1
- Connector 6, Pin2** – COM Relay1
- Connector 6, Pin3** – NO Relay1
- Connector 7, Pin1** – NC Relay2
- Connector 7, Pin1** – COM Relay2
- Connector 7, Pin1** – NO Relay2

\* Operating mode is selected by jumper DI1/DI2 - closed for “dry contact” and open for “logic level”. By default jumpers are closed.

### 6.2.1. Power supply connection

TCG120 is designed to be supplied by adapter SYS1421-0612-W2E or similar, intended for use in the conditions of overvoltage category II. The power supply equipment shall be resistant to short circuit and overload in secondary circuit.

When in use, do not position the equipment so that it is difficult to disconnect the device from the power supply.

### 6.2.2. Digital inputs connection

**Attention! Digital inputs are NOT galvanic isolated.**

The TCG120 digital inputs can be used in two modes – “dry contact” and “logic level”. The mode is determined by the jumper, close to the corresponding input. To change the operation mode, the plastic enclosure must be opened. Closed jumper determines “dry contact” mode while open “logic level”. By default digital inputs are in “dry contact” mode.

In “dry contact” mode digital inputs can be used to monitor the state of a discrete device – door contact switch, push button, PIR detector etc.

Following picture illustrates how a dry contact switch can be connected to the input (or inputs) of TCG120. One side of the contact is connected to “Digital In” and the other side is connected to “GND” terminals.



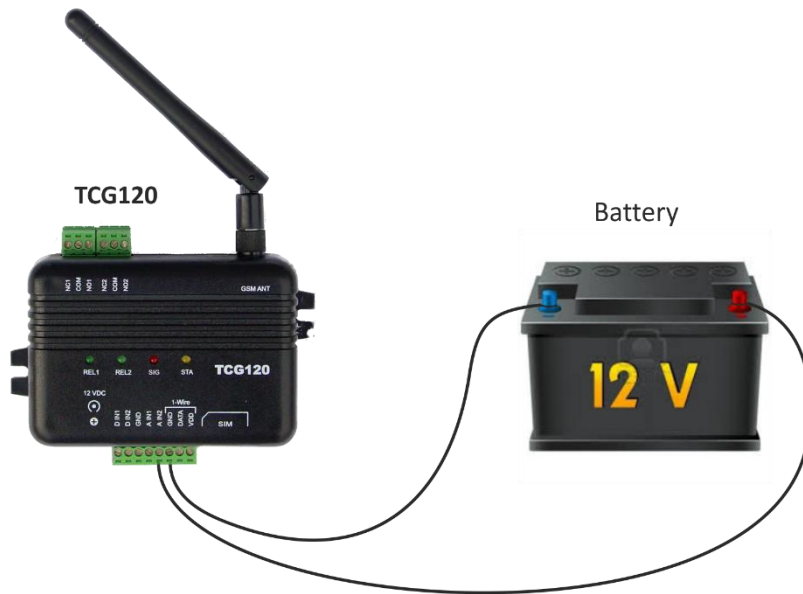
### 6.2.3. Analog inputs connection

**Attention! Analog inputs are NOT galvanic isolated.**

Analog inputs of TCG120 can be used for monitoring of DC voltage up to 60VDC. They can be connected directly to batteries, solar panels, power supplies etc.

Built in functionality “Multiplier”, “Offset” and “Dimension” for every analog input gives possibility to monitor sensors with analog outputs and see directly measured parameter. It is also possible to monitor voltages bigger than 60 VDC with external resistive dividers.

Following picture illustrates how a battery can be connected to the analog input of TCG120. One side of the contact is connected to “Analog In” and the other side is connected to “GND” terminals.



### 6.2.4. Sensor connection

Up to 4 1-Wire sensors can be connected to TCG120 controller. The device supports TSTxxx (temperature) and TSHxxx (humidity&temperature) sensors.

1-Wire is a registered trademark of Maxim Integrated Products, Inc. It is designed to connect several sensors over a short wiring. It is not suitable for long distances or environments with EMC interference. We recommend reading Maxim’s 1-Wire tips at <http://www.maxim-ic.com/app-notes/index.mvp/id/148>.

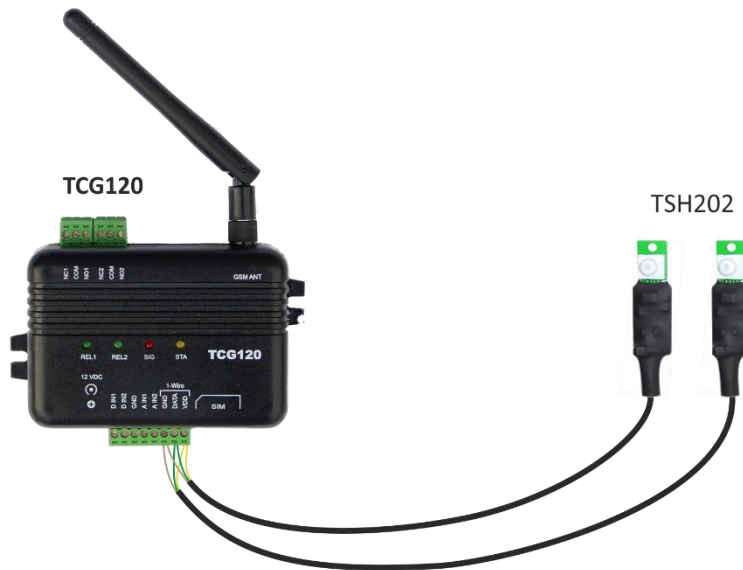
The sensors have three wires – positive voltage (+VDD), ground (GND) and bidirectional data (Data). The colors of wires for every sensor are specified in its user manual.

It is strongly recommended to use “daisy chained” (linear topology) for multiple sensors:





“Star” topology can be used only as a last resort for up to 4 sensors and total cable length up to 10 meters:



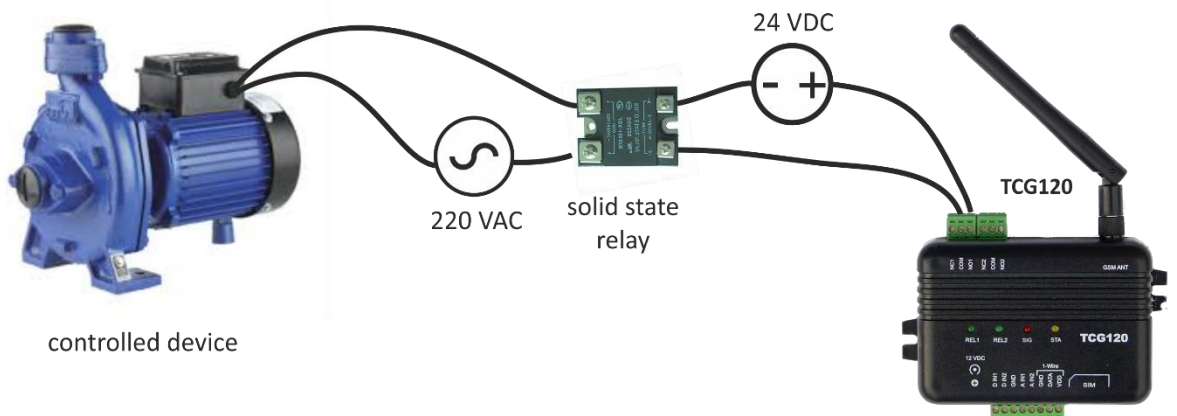
There are many parameters which determine the maximum length of the wires - type of cable, the number of sensors, ambient electromagnetic noise and sensor network topology.

It is strongly recommended to use only UTP/FTP cables and keep total cable length up to 30 m. Although functionality has been achieved in longer distance, we cannot guarantee error-free operation over mentioned wiring length.

We guarantee proper operation only with Teracom 1-Wire sensors.

### 6.2.5. Relay connection

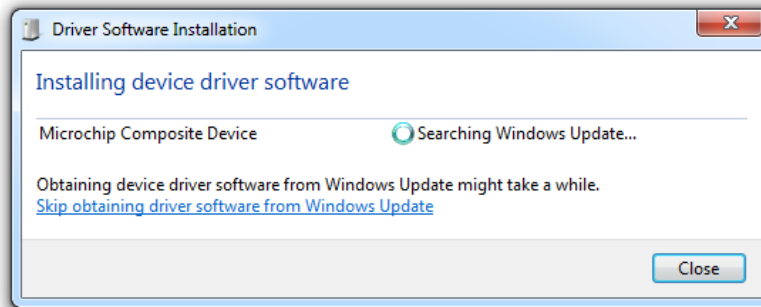
The relay contacts are internally connected directly to the terminal connectors. For all relays normally open, normally close and common contacts are available. For loads with higher switchable current/voltage than specified, an external relay should be used.



When mechanical relays switch inductive loads such as motors, transformers, relays, etc., the current will arc across the relay contacts each time the contacts open. Over time, this cause wears on the relay contacts which shorten their life. When switching an inductive load, it is recommended that relay contact protection devices are used.

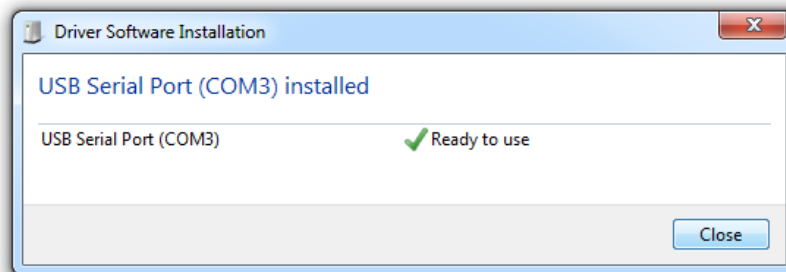
## 7. Initial setup via USB

The initial setup of TCG120 controller is done with a computer running **Windows 7** or newer **Microsoft Windows** operating system. After power-up, the controller should be connected to the computer with USB cable. Once the USB cable is connected, the operating system automatically starts to install the drivers for the communication with the device. The following message appears:



The following drivers will be installed:

- Microchip composite device
- USB serial port driver



If for some reason the USB serial port driver cannot be installed automatically, it must be installed manually. The driver can be downloaded from the TCG120 product page at [www.teracomsystems.com](http://www.teracomsystems.com). After successful driver installation the device will be recognized as Mass storage, the following window appears on the screen:



The only file stored on the mass storage is a tool called "TConfig". This tool enables the communication between the TCG120 and PC. After starting the TConfig tool, the following program will appear:





Pressing the “Start” button will start your web browser and display the Monitoring page of your TCG120 controller.

## 7.1. Monitoring page

Monitoring page displays the current I/O state of TCG120 controller. The page has 4 sections – “Sensors”, “Digital inputs”, “Analog inputs” and “Relays”.

For every parameter (sensor, input, relay) there is a description of up to 20 characters. The default descriptions can be changed in “Setup-Input/Output” menu.

The Monitoring page can be automatically refreshed on an interval of 0 to 254 seconds. Zero means no automatic refresh. This parameter is set in section “Setup->System->Monitoring page automatic refresh”. By default it is 30 seconds.

### 7.1.1. Sensors section

All detected 1-Wire sensors are shown in this section. Sensor detection is made either after connecting the power supply or by “Scan for new sensors” button. All found sensors are shown in ascending order refer their unique ID number. For every sensor there are description, value, and ID information.

Teracom temperature sensors readings are shown in the Value 1 column. TSH2xx temperature/humidity sensors have the 2nd parameter shown on the Value 2 column.

It is possible to lock sensors in a specific position. To do this all sensors should be added one by one. After every addition new scan should be made and newly found sensor should be locked in its position. If all sensors are locked, removing one “in the middle” will not change the positions of following sensors after reset. This option is very useful when TCG120 is used like a part of monitoring and control system managed either by SNMP or HTTP API commands.

Pos	Description	Value 1	Value 2	ID	Lock
1	TST100 Home	21.8°C	---	[00000309D019]	<input checked="" type="checkbox"/>
2	TSH202	23.1°C	45.2%RH	[FF001602B143]	<input checked="" type="checkbox"/>
3		---	---	[FFFFFFFFFFFF]	<input type="checkbox"/>
4		---	---	[FFFFFFFFFFFF]	<input type="checkbox"/>

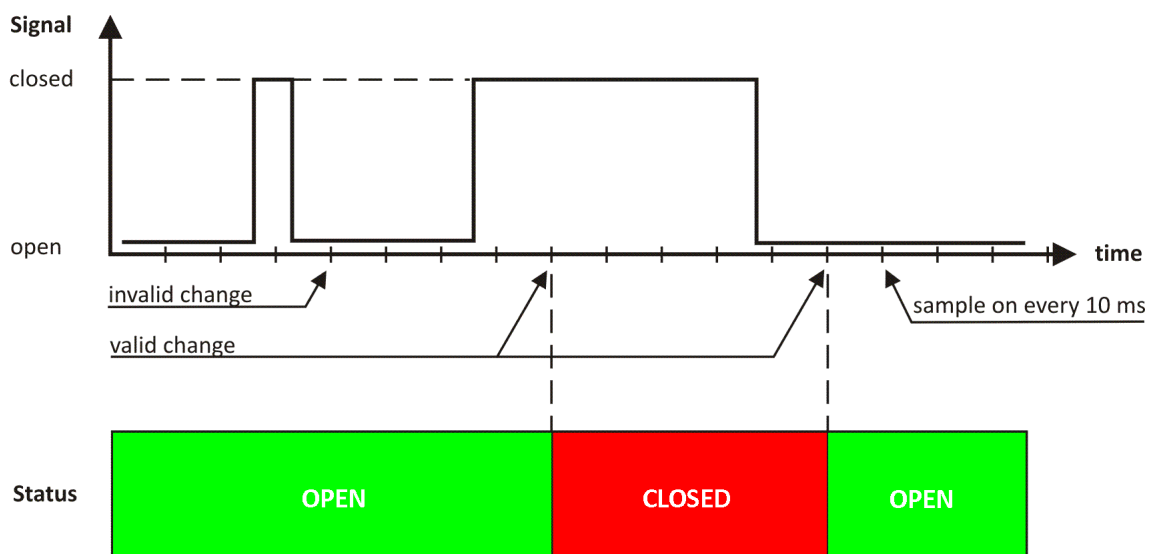
Scan for new sensors

### 7.1.2. Digital inputs section

Digital inputs can be used for monitoring the state of discrete devices – motion sensor, door contact, relay contact, alarm output etc. Both digital inputs are not galvanic isolated.

One side of the contact is connected to “Digital In” and the other side is connected to “GND” pins.

Digital inputs are sampled every 10mS. The change of input status is considered valid if the same value is read in two consecutive samples.



Status of every input is shown by text and by color.

Digital input	Status	Digital input	Status
Digital 1	CLOSED	Digital 2	OPEN

The default descriptions and status names can be changed in “Setup-Input/Output”.

### 7.1.3. Analog inputs section

Analog inputs can be used for monitoring of DC voltage sources – analog sensors, batteries, power supplies, solar panels etc. Both analog inputs are not galvanic isolated.

One side of source is connected to “Analog In” and the other side is connected to “GND” pins.

Analog input	Value	Analog input	Value
Analog 1	0.00	Analog 2	5.07

For every analog input 3 variables – “Unit”, “Multiplier” and “Offset” can be set in “Setup->Input/Output” section.

### 7.1.4. Relay section

The section displays the current state of relays. Each relay can be activated either remotely by SMS/single call/HTTP command (see PUSH Mode for more details) or locally from the status of a monitored parameter (1 Wire sensor, analog voltage and dry contact). Only one parameter can control the relay at the same time.

Relay	Status	Control
Relay 1	ON	<input type="button" value="ON"/> <input type="button" value="OFF"/> <input type="button" value="Pulse"/>
Relay 2	ON	automatically controlled by S1 Temp

Pulse duration and parameters for local relay activation can be set separately for each relay in “Setup->Input/Output->Relay outputs”. For locally activated relays a text description of the controlling parameter is displayed rather than buttons.

## 7.2. Setup page

### 7.2.1. Input/Output

#### 7.2.1.1. Sensors

The sensors descriptions up to 20 symbols can be set in this section. These descriptions will appear in the monitoring page, XML data, SMS and Email alerts.

Sensors	
Sensor #	Description
Sensor 1	<input type="text" value="TST100 Home"/>
Sensor 2	<input type="text" value="TSH202"/>
Sensor 3	<input type="text" value="Sensor3"/>
Sensor 4	<input type="text" value="Sensor"/>

#### 7.1.1.2. Digital inputs

The digital inputs descriptions (up to 20 symbols) and states (up to 11 symbols) can be set in this section. These descriptions and states will appear in the monitoring page, XML data, SMS and Email alerts.

Digital inputs			
Digital input #	Description	Low level	High level
Digital Input 1	<input type="text" value="Door"/>	<input type="text" value="Closed"/>	<input type="text" value="Open"/>
Digital Input 2	<input type="text" value="Fuel"/>	<input type="text" value="Empty"/>	<input type="text" value="Full"/>

#### 7.1.1.3. Analog inputs

The analog inputs descriptions (up to 20 symbols) can be set in this section. These descriptions will appear in the monitoring page, XML data, SMS and Email alerts.

Analog inputs				
Analog input #	Description	Unit	Multiplier	Offset
Analog input 1	<input type="text" value="Battery"/>	<input type="text" value="VDC"/>	<input type="text" value="1.000"/>	<input type="text" value="0.000"/>
Analog input 2	<input type="text" value="Sensor"/>	<input type="text" value="Kg"/>	<input type="text" value="1.600"/>	<input type="text" value="0.000"/>

For every analog input field “Unit”, “Multiplier” and “Offset” parameters are available to convert the raw voltage input to meaningful engineering units if required. The shown value is calculated by:

$$DV[Un] = (AV - OF) * MU$$

Where:

DV – displayed value;

Un – unit;

AV – real analog voltage from source;

MU – multiplier in dimension [parameter/Volt];

OF – offset.

Example:

For humidity sensor HIH-4000-003 following parameter (coming from data sheet) should be set for fine work:

Unit - %RH

Offset - 0.826

Multiplier - 31.74, the value is inversed of slope parameter (1/0.0315);

If the output voltage of this sensor is 3.198V on the monitoring page will be shown 75.28% RH:

$$75.28 = (3.198 - 0.826) * 31.74$$

By default and after “Factory default settings” procedure:

Unit - V

Offset - 0.00  
Multiplier - 1.00

#### 7.1.1.4. Relay outputs

For every relay description, up to 20 characters can be set. The pulse duration can be different for both relays. The resolution is 0.1 second, the maximum pulse value is 3600 seconds.

Relay outputs			
Relay #	Description	Pulse (seconds)	Activated from
Relay 1	Garage Door	2.0	Phone call ▼
Relay 2	Heating	0.0	S1->Temp ▼

Both relays can be activated either remotely by SMS/single call/HTTP command or locally from the status of a monitored parameter. This setting is made from the “Activated from” drop down menu, the possible options are:

- **SMS/HTTP** - by selecting this option the relay outputs can be activated by SMS from authorized number or by sending HTTP command (detailed description in “Push mode” section);
- **Phone call** - by selecting this option the relay outputs can be activated (pulse only) by a single call from authorized number.

For local activation, alarm conditions for different sources are used. They are set up in section “Setup->Alarm conditions”. Following choices to assign parameter to relay are possible:

- **S?** – “S” stands for “Sensor 1-Wire”. The relay is activated from value measured from specified 1-Wire sensor and rules for ranges specified in “Setup->Alarm conditions”. Question mark masks number from 1 to 4;
- **A?** - “A” stands for “Analog input”. The relay is activated from value measured from specified analog input and rules for ranges specified in “Setup-Alarm conditions”. Question mark masks number from 1 to 2;
- **D?** - “D” stands for “Digital input”. The relay follows the state of specified digital input. Question mark masks number from 1 to 2;

All changes in above sections are saved by pressing the “Save” button.

### 7.2.2. SMS/Mail/Call

#### 7.2.2.1. SMS Setup

The SMS Alarm recipients can be set in this section. The “Master” has special rights to change the device settings using SMS commands (more information in “Device setup via SMS messages” section). The remaining 4 recipients can receive SMS messages if any of the parameters is in alarm state and ask for parameter state/value by sending an SMS message. By pressing the “send test SMS” button all SMS recipients will receive a confirmation SMS message.

SMS Setup	
Recipient 1 (Master)	+359885838193
Recipient 2	
Recipient 3	
Recipient 4	
Recipient 5	
<a href="#">send test SMS</a>	

### 7.2.2.2. Email Setup

The Email Alarm recipients and SMTP server can be set in this section. By pressing the “send test e-mail” button all E-mail recipients will receive a confirmation message if the SMTP server settings are correct.

Email setup			
Recipient 1	<input type="text" value="info@teracom.cc"/>	Mail server address	<input type="text" value="smtp.gmail.com"/>
Recipient 2	<input type="text"/>	Mail server port	<input type="text" value="465"/>
Recipient 3	<input type="text"/>	Sender e-mail	<input type="text" value="teracombg@gmail.com"/>
Recipient 4	<input type="text"/>	Username	<input type="text" value="teracombg@gmail.com"/>
Recipient 5	<input type="text"/>	Password	<input type="password" value="*****"/>
Global subject	<input type="text" value="TCG120 alarm"/>	SSL authentication	<input type="text" value="Enabled"/>

TLS protocol is used for secure communication with public mail servers. TCG120 supports – TLS 1.0 with RSA\_WITH\_AES\_256\_CBC\_SHA, RSA\_WITH\_AES\_128\_CBC\_SHA, RSA\_WITH\_RC4\_128\_SHA, RSA\_WITH\_RC4\_128\_MD5, RSA\_WITH\_3DES\_EDE\_CBC\_SHA, RSA\_WITH\_AES\_256\_CBC\_SHA256.

This ensures successful operation with almost all public servers.

All changes in above sections are saved by pressing the “Save” button.

### 7.2.2.3. Phone call Setup

The relay outputs of TCG120 controller can be controlled (only pulse) by a single call from authorized number. The maximum number of the authorized numbers is 100. These numbers can be set manually or by sending a SMS message from the Master.

Phone call setup			
1	<input type="text"/>	2	<input type="text"/>
3	<input type="text"/>	4	<input type="text"/>
5	<input type="text"/>	6	<input type="text"/>
7	<input type="text"/>	8	<input type="text"/>
9	<input type="text"/>	10	<input type="text"/>
11	<input type="text"/>	12	<input type="text"/>

## 7.2.3. Conditions

This section is used for parameterization of trigger and alert conditions for 1-Wire sensors, analog and digital inputs.

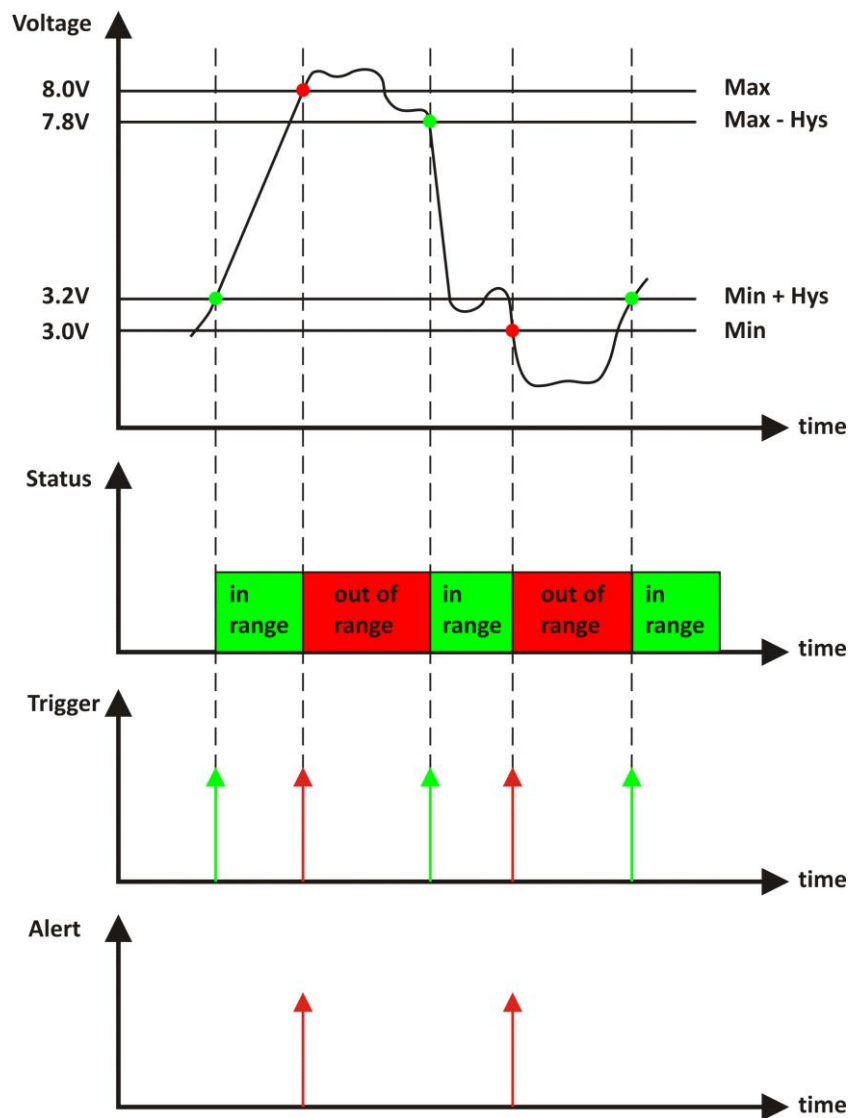
### 7.2.3.1. 1-Wire sensors and analog inputs

For every sensor two type of fields are presented – one for set of trigger conditions (“Min”, “Max” and “Hys.”) and other one for the wanted action.

Sensors						
#	Description	Type	Min.	Max.	Hys.	If out of range
1	Sensor1	Temp, °C	<input type="text" value="1.0"/>	<input type="text" value="25.0"/>	<input type="text" value="1.0"/>	<input type="text" value="send email"/>
		Humi,%RH	<input type="text" value="0.0"/>	<input type="text" value="60.0"/>	<input type="text" value="1.0"/>	<input type="text" value="email+SMS"/>
2	Sensor2	---	<input type="text" value="0.0"/>	<input type="text" value="0.0"/>	<input type="text" value="0.0"/>	<input type="text" value="do nothing"/>
		---	<input type="text" value="0.0"/>	<input type="text" value="0.0"/>	<input type="text" value="0.0"/>	<input type="text" value="do nothing"/>

“Min” and “Max” indicate border of working range for the monitored parameter. A “Max” trigger condition occurs when the value exceeds the trigger set point. A “Min” trigger condition occurs when the value is lower than the trigger set point. In both cases the monitored parameter goes out of range.

Coming back in range for observed parameter is considered when the value goes higher than (Min + Hys) or lower than (Max – Hys). Hysteresis (“Hys”) is used to prevent from excessively triggering when the value fluctuates around the trigger point.



If the monitored parameter goes out of range, the following actions can be triggered:

- **Send email** – the authorized recipients will receive email message with the measured value ;
- **Send SMS** – the authorized recipients will receive SMS message with the measured value;
- **Email+SMS** - the authorized recipients will receive SMS and email messages with the measured value.

All above settings are valid also for the analog inputs.

Analog inputs						
#	Description	Dimension	Min.	Max.	Hys.	If out of range
1	Analog In1	volts	<input type="text" value="0.0"/>	<input type="text" value="0.0"/>	<input type="text" value="0.0"/>	<input type="text" value="do nothing"/>
2	Analog In2	volts	<input type="text" value="0.0"/>	<input type="text" value="0.0"/>	<input type="text" value="0.0"/>	<input type="text" value="do nothing"/>

Example:

*TCG120, TST100 and appropriate heater are used to control the room temperature. The wanted minimum temperature is 19°C. The initial temperature is 17°C. TST100 is assigned on the first position for 1-Wire sensors. For Relay1 local activation from Sensor1 is set. Following parameters are set for Sensor1: Min=19, Max=100 and Hys=0.5.*

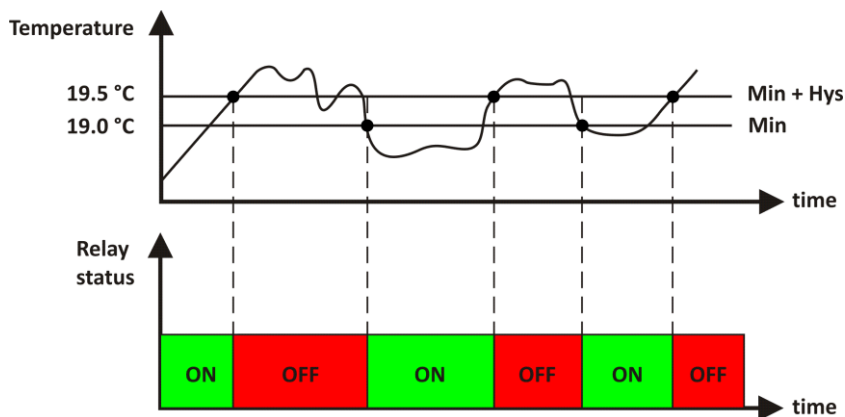


Sensors						
#	Description	Type	Min.	Max.	Hys.	If out of range
1	Temp 1	Temp, °C	19.0	100.0	0.5	send email ▼

When the controller is switched on, Relay1 is immediately activated because the monitored temperature is out of range. This switches the heater on. The temperature is going higher.

When temperature reaches 19.5°C (19.0 + 0.5) it goes in range (trigger condition) and Relay1 is deactivated. The heater is switched off.

The temperature falls and when it reached 19°C it goes out of range (trigger and alert conditions). The relay is activated (heater is switched on) and e-mail is sent.



The “Max” value is set far enough from the wanted temperature to avoid trigger/alert conditions around it.

### 7.2.3.2. Digital inputs

The alarm states for both digital inputs can be set in this section. The possible actions are the same as sensors and analog inputs:

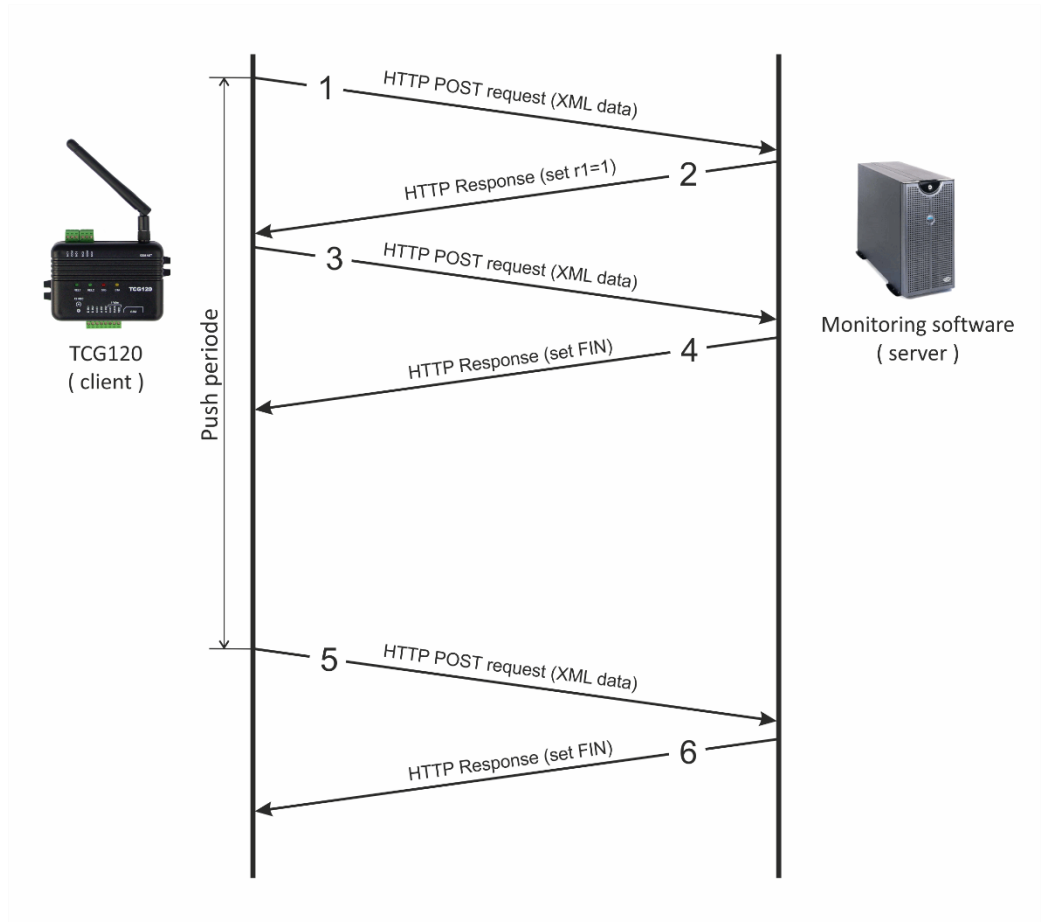
Digital inputs				
#	Description	Current state	Select alarm state	On active alarm
1	Door	Closed	Open ▼	send email ▼
2	Tank	Full	Empty ▼	send SMS ▼

In the example above email alert will be sent if there is low level (state Open) on digital input 1 and SMS message will be sent if there is a low level (state Empty) on digital input 2.

All changes in above sections are saved by pressing the “Save” button.

### 7.2.4. Push

Push mode is intended for easy integration with client-server monitoring programs. When Push mode is enabled, TCG120 (client) begins to send periodically HTTP request messages (POST method) to the monitoring program (server). These HTTP request messages contain XML data (status.xml) which is sent to the server for processing. The monitoring software (server) answers with HTTP response message. The respond messages are used not only for confirmation, but also to send command to the TCG120 controller, for example: set r1=1. Below is a typical communication session between TCG120 and remote server:



- 1 - HTTP POST request with XML data is sent to the remote server
- 2 - the server responds with HTTP response message, which contains “set r1=1” command as a brief text in the message body
- 3 - new HTTP POST request is sent to the server to confirm the reception of the “set r1=1” command.
- 4 - the server sends new HTTP response, which includes “set FIN” in the message body. This indicates that there are no pending commands and the session can be closed.
- 5 - when the Push period timer expires, TCG120 sends new HTTP POST request to the server
- 6 – the server answers with “set FIN” – there is no pending commands and the session can be closed.

To enable the Push mode, the following parameters should be set:

- **Method** – HTTP POST should be selected;
- **URL** – the URL of the remote server;
- **Period** – the Push period is set between 1 and 255 minutes.

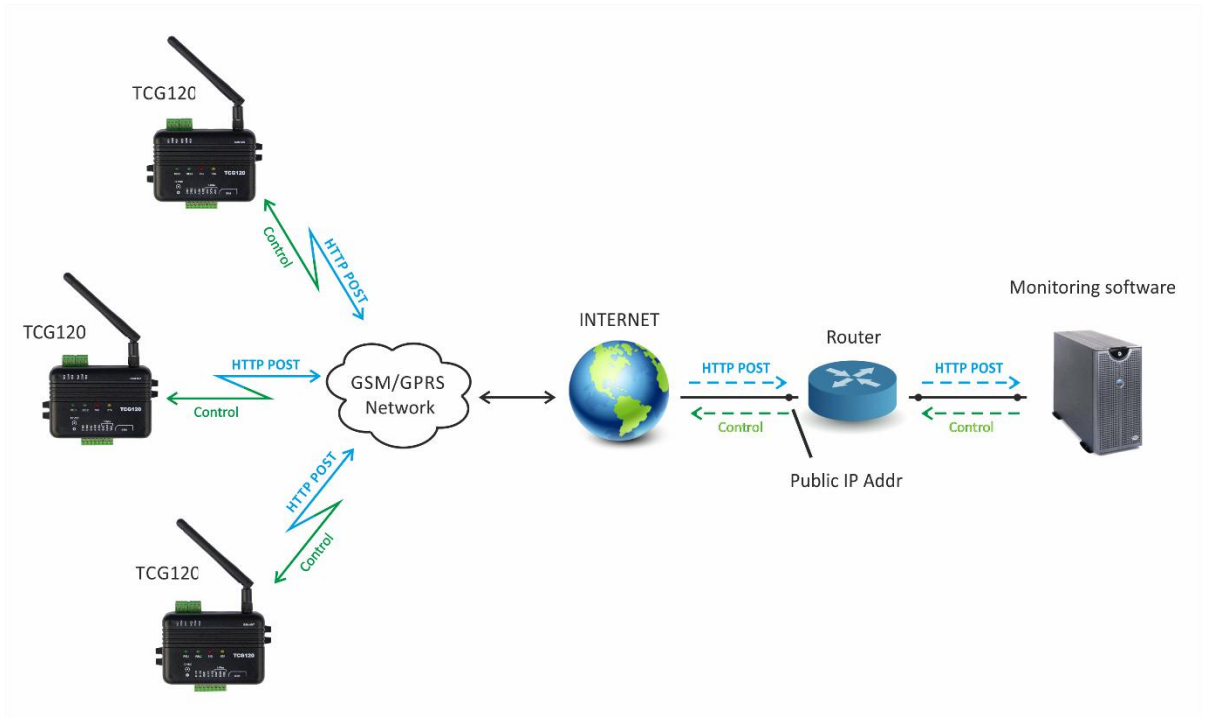
Method	HTTP POST ▼
URL: http://	212.25.45.120:180/xampp/test2/pushtest.php
Period, minutes (1-255)	1
Connect On Any Alarm	<input type="checkbox"/>
Key	00:00:00:00:00:00
Process Answer	Yes ▼
<a href="#">View Status.xml</a>	
<input type="button" value="Test Push"/>	

If the checkbox “Connect on any alarm” is selected, the HTTP POST request will be send if any alarm condition occurs. The “Key” field value is sent in the XML data and can be used for device identification.

If “Process Answer” option is enabled, the TCG120 controller will be able to process the commands, which are sent from the remote server. The valid commands are described below:

Command	Description
set r1=1	Turn Relay 1 ON
set r1=0	Turn Relay 1 OFF
set r2=1	Turn Relay 2 ON
set r2=0	Turn Relay 2 OFF
set tg1=1	Toggle Relay 1 state
set pl1=1	Pulse Relay 1
set r1=1&r2=1	Turn both relays ON
set r1=0&r2=0	Turn both relays OFF
set FIN	No pending command

Typical monitoring application is shown on the picture below:



The structure of **Status.xml** file is shown in **Appendix B**.

## 7.2.5. System

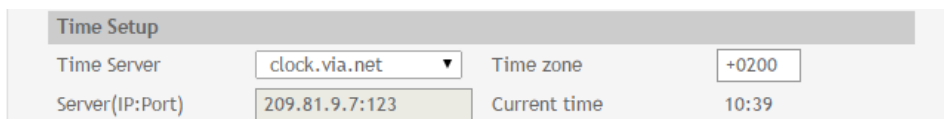
### 7.2.5.1. System status

System status section shows some of the system parameters and displays the GSM network status.

System status			
GSM connection	yes	GPRS connection	yes
Service provider	Mobitel EAD	Signal strenght	-51dBm(100%)
IMEI	863071013318719	GSM FW version	M95EBR01A06

### 7.2.5.2. Time setup

TCG120 controller is equipped with a real-time clock. Time setup is performed in this section.



Time Setup			
Time Server	clock.via.net	Time zone	+0200
Server(IP:Port)	209.81.9.7:123	Current time	10:39

The following parameters can be set:

- **Time server** – it is possible to choose between 2 public time servers and custom Time server (NTP server);
- **Time zone** – the device time zone should be set here, for GMT +2 this parameter should be set to “+0200”;
- **Custom time server** – the following format should be used: IPaddress:Port. For example: 209.81.9.7:123.

The current system time is sent in the status.xml file when Push mode is enabled.

### 7.2.5.3. GPRS setup

To set the GPRS connection it is necessary to enter the APN (Access Point Name). This setting can be different for each GSM service provider. By default it is set to “internet”. Some providers may require also user name and password.



GPRS Setup	
APN	internet
Username	
Password	

### 7.2.5.4. Setup&Monitoring page refresh

In these sections you can set the temperature units, refresh interval of the monitoring page and device name. The device name is included in the Status.xml file and is used for easier identification when TCG120 is part of larger monitoring/control systems.



Setup	
Temperature Units	Celsius
Device name	TCG120

Monitoring page automatic refresh	
Interval (0-253)sec.	30

All changes in above sections are saved by pressing the “Save” button.

### 7.2.5.5. Firmware update

The procedure is described in details in “Firmware update” section.

## 8. Device setup via SMS

TCG120 controller supports 5 SMS users (Master + 4 users). The Master is able to configure some of the system parameters by SMS messages as well as to receive alarm and status messages. The rest 4 SMS users are able only to receive alarm and status messages. Messages from numbers that are not authorized will be ignored by the controller. The complete list with the supported SMS messages can be found in **Appendix C**.

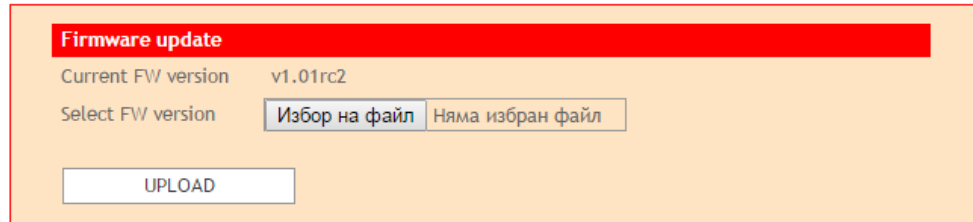
## 9. Firmware update

TCG120 controller supports firmware update over USB or over GPRS.

### 9.1. Firmware update over USB

To update the device over the USB follow the steps below:

- Connect the device to PC with USB cable;
- Start TConfig program, from attached removable disk and open the web interface of TCG120 controller;
- Go to Setup->System->Firmware update;



- Press “choose file” button and select the update file (.cod extension);
- Press “UPLOAD” button;

The firmware will be uploaded and verified, the “Upload” procedure takes around 6 minutes. If the file is correct, the following message will appear: **“Upload Successful. Please wait while updating...”**. The “Update” procedure takes around 2 minutes. Once the update is complete, the browser will be redirected to the monitoring page.

**Attention! Don’t turn off the power supply during the update. Turning off the power supply will damage the device.**

### 9.2. Firmware update over GPRS

To update the device over the GPRS follow the steps below:

- Upload the update file (.cod extension) on public HTTP server ;
- Send firmware update command (the syntax of the SMS message is described in the “Device setup via SMS” section in the user manual). **Please note that only the Master can send this message.**

The firmware will be uploaded and verified, the “Upload” procedure via GPRS takes around 3 minutes. If the file is correct, the Master will receive confirmation SMS message. The “Update” procedure takes around 2 minutes. Once the update is complete, TCG120 will restart.

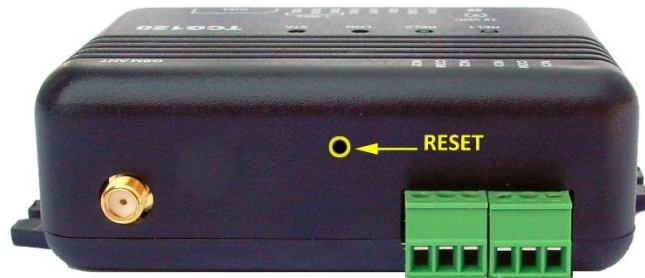
**Attention! Don’t turn off the power supply during the update. Turning off the power supply will damage the device.**

## 10. Factory default settings

TCG120 can be restored to its original factory default settings, following the steps below:

- Turn off the power supply;
- Press and hold the RESET button then turn on the power supply;
- STA and SIG LEDs will turn ON;
- Release the RESET button.

The controller will restore its default settings.



## 11.Environment information

This equipment is intended for use in a Pollution Degree 2 environment, at altitudes up to 2000 meters. When the controller is a part of a system, the other elements of the system shall comply with the EMC requirements and shall be intended for use in the same ambient conditions.

## 12.Safety

This device must not be used for medical, life saving purposes or for any purpose where its failure could cause serious injury or the loss of life.

To reduce the risk of fire, only flexible stranded wire, with cross section 0.5mm<sup>2</sup> or larger for wiring of digital and analog inputs and relay output of the device should be used.

To avoid electric shock and fire hazard, do not expose this product to liquids, rain, or moisture. Objects filled with liquids, such as vases, should not be placed on this device.

There is a risk of overheating (damage) of controller, if recommended free spaces to adjacent devices are not ensured. Joint part with external component shall have space for attachment/removal of the cable after installation.

Teracom does not guarantee successful operation of the product if the product was used under conditions deviating from the product specifications.

## 13.Maintenance

Upon completion of any service or repairs to the device or once per year, safety check must be performed to determine that this product is in proper operating condition. Clean the device only with dry cloth. Do not use a liquid cleaner or an aerosol cleaner. Do not use a magnetic/static cleaning device (dust remover) or any kind of abrasive materials to clean the device.

## 14.Package content

1. TCG120
2. GSM antenna
3. Quick start guide



LED indicators are intended to show the status of the controller. The following states are displayed after the power supply is turned ON:

**Controller initialization** – Both LEDs (SIG and STA) turn ON for 1 second every time when the controller is initialized – after turning the power supply ON or after firmware update

**Error message** – after Controller initialization both LEDs will turn OFF. If there is an error message, STA Led will start to flash. The number of flashes (flash length – 1 second) shows different error message:

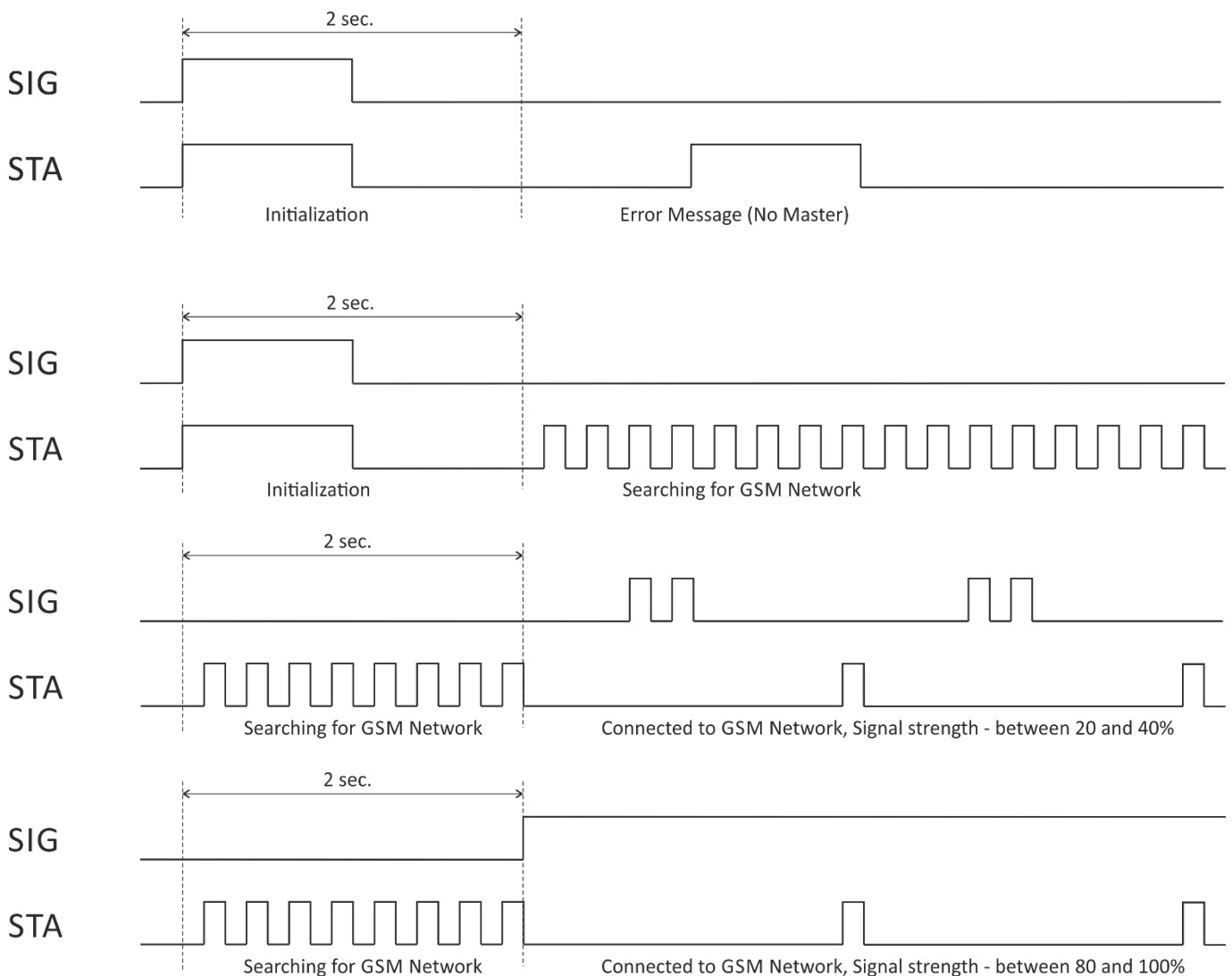
- Master not set – STA LED flashes once;
- Hardware problem – STA LED flashes constantly.

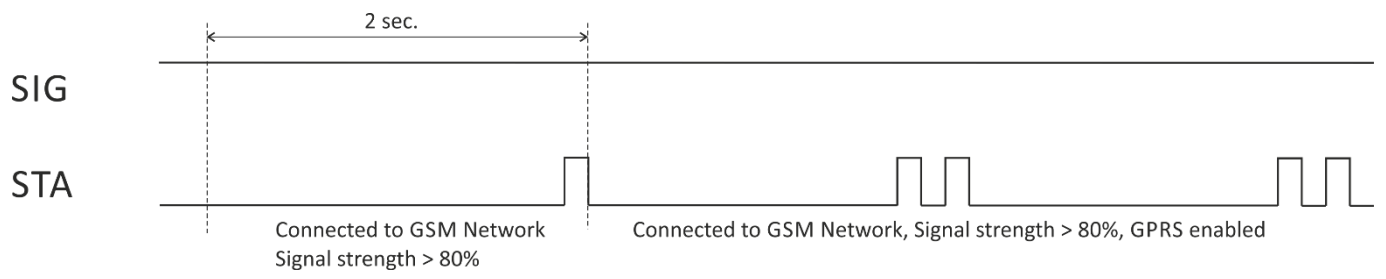
If there is no error message available, after Controller Initialization the LEDs will display directly the next controller state - Searching for GSM network.

**Searching for GSM network** – SIG LED is OFF, STA LED flashes (flash length – 200ms).

**Connected to GSM network** – Once the controller is connected to the GSM network, SIG and STA LEDs will display the level of the GSM signal. STA LED will flash once every 2 seconds (flash length–200ms.) This indication ensures that TCG120 is connected to the network. If STA LED flashes twice – this indicates that GPRS connection is established. Between the STA LED flashes, SIG LED will indicate the signal strength: 1 flash (200ms.) means that signal strength is between 0 and 20%, 2 flashes – 20 and 40%, 3 flashes – 40 and 60%, 4 flashes – 60 and 80%. If SIG LED is solid ON– this indicates that the signal level is higher than 80%.

The above described controller states are shown in the diagrams below:





Structure of Status.xml file:

```
<?xml version="1.0" encoding="utf-8"?>
<Monitor>
  <DeviceInfo>
    <DeviceName>TCG120</DeviceName>
    <ID>863071013318727</ID>
    <FwVer>v1.09</FwVer>
    <MnfInfo>www.teracomsystems.com</MnfInfo>
  </DeviceInfo>
  <S>
    <S1>
      <description>Sensor1</description>
      <id>FFFFFFFFFFFF</id>
      <item1>
        <value>---</value>
        <unit>---</unit>
        <alarm>0</alarm>
      </item1>
      <item2>
        <value>---</value>
        <unit>---</unit>
        <alarm>0</alarm>
      </item2>
    </S1>
    <S2>
      <description>Sensor2</description>
      <id>FFFFFFFFFFFF</id>
      <item1>
        <value>---</value>
        <unit>---</unit>
        <alarm>0</alarm>
      </item1>
      <item2>
        <value>---</value>
        <unit>---</unit>
        <alarm>0</alarm>
      </item2>
    </S2>
    <S3>
      <description>Sensor3</description>
      <id>FFFFFFFFFFFF</id>
      <item1>
        <value>---</value>
        <unit>---</unit>
        <alarm>0</alarm>
      </item1>
      <item2>
        <value>---</value>
        <unit>---</unit>
        <alarm>0</alarm>
      </item2>
  </S>
</Monitor>
```

```

</S3>
<S4>
  <description>Sensor4</description>
  <id>FFFFFFFFFFFF</id>
  <item1>
    <value>---</value>
    <unit>---</unit>
    <alarm>0</alarm>
  </item1>
  <item2>
    <value>---</value>
    <unit>---</unit>
    <alarm>0</alarm>
  </item2>
</S4>
</S>
<AI>
  <AI1>
    <description>Analog In1</description>
    <value>0.00</value>
    <unit>VDC</unit>
    <multiplier>1.000</multiplier>
    <offset>0.000</offset>
    <alarm>0</alarm>
  </AI1>
  <AI2>
    <description>Analog In2</description>
    <value>0.00</value>
    <unit>VDC</unit>
    <multiplier>1.000</multiplier>
    <offset>0.000</offset>
    <alarm>0</alarm>
  </AI2>
</AI>
<DI>
  <DI1>
    <description>Digital In1</description>
    <value>OPEN</value>
    <valuebin>1</valuebin>
    <alarm>0</alarm>
  </DI1>
  <DI2>
    <description>Digital In2</description>
    <value>OPEN</value>
    <valuebin>1</valuebin>
    <alarm>0</alarm>
  </DI2>
</DI>
<R>
  <R1>
    <description>Relay1</description>
    <value>OFF</value>

```

```
        <valuebin>0</valuebin>
    </R1>
    <R2>
        <description>Relay2</description>
        <value>OFF</value>
        <valuebin>0</valuebin>
    </R2>
</R>

<HTTPPush>
    <Key>00:00:00:00:00:00</Key>
    <PushPeriod>1</PushPeriod>
</HTTPPush>
<hwerr>0</hwerr>
<Alarmed>0</Alarmed>
<Time>
    <Date>06.04.2017</Date>
    <Time>10:17:04</Time>
</Time>
</Monitor>
```

Below is a list with the supported SMS messages. Note that the underscore character “\_” must be replaced by one space character.

**SMS:** *master\_<number>*

**Syntax:** <number> - mobile number in international format

**Rights:** Master

**Description:** this message is used to change the Master number.

**Example:** *master +359885838193*

**Answer:** *m+359885887766*

**SMS:** *set\_sms\_users\_u1<number>,u2<number>,u3<number>,u4<number>*

**Syntax:** <number> - mobile number in international format

**Rights:** Master

**Description:** this message is used to add/delete SMS users.

**Example 1:** *set sms users u1+359885887766,u2+359885776655,u3+359885665544,u4+359885554433*

**Answer:** *u1+359885887766,u2+359885776655,u3+359885665544,u4+359885554433*

**Example 2:** *set sms users u1+359885887766,u2+359885776655,u3,u4*

**Answer:** *u1+359885887766,u2+359885776655,u3,u4*

**SMS:** *display\_sms\_users*

**Rights:** Master, Users

**Description:** this message is used to request a list with the SMS users.

**Example:** *display sms users*

**Answer:** *M+359885887722,u1+359885887766,u2+359885776655,u3,u4*

**SMS:** *set\_email\_users\_u1:<email>,u2:<email>,u3:<email>,u4:<email>,u5:<email>*

**Syntax:** <email> - valid email address

**Rights:** Master

**Description:** this message is used to add/delete email users.

**Example 1:** *set email users u1mail1@teracomsystems.com,u2mail2@teracomsystems.com,u3mail3@teracomsystems.com,u4mail4@teracomsystems.com,u5mail5@teracomsystems.com*

**Answer:** *u1:mail1@teracomsystems.com,u2:mail2@teracomsystems.com,u3:mail3@teracomsystems.com,u4:mail4@teracomsystems.com,u5:mail5@teracomsystems.com*

**Example 2:** *set email users u1:mail1@teracomsystems.com,u2:mail2@teracomsystems.com,u3,u4,u5*

**Answer:** *u1mail1@teracomsystems.com,u2mail2@teracomsystems.com,u3,u4,u5*

**SMS:** *display\_email\_users*

**Rights:** Master, Users

**Description:** this message is used to request a list with the email users.

**Example:** *display email users*

**Answer:** *u1mail1@teracomsystems.com,u2mail2@teracomsystems.com,u3,u4,u5*

**SMS:** *add\_call\_users\_<number1><number2>...<number5>*

**Syntax:** <number1÷5> - mobile number in international format

**Rights:** Master

**Description:** this message is used to add up to 5 numbers to the Call list.

**Example:** *add call users +359885111111+359885222222+359885333333+359885444444+359885555555*

**Answer:** *+359885111111+359885222222+359885333333+359885444444 +359885555555\_added*



**SMS:** *display\_call\_users\_<U>*

**Syntax:** <U> - number from 1 to 10

**Rights:** Master, Users

**Description:** this message is used to request a list of 10 single call users. If U=1, the answer will contain the numbers from 1 to 10. If U=5, the answer will contain the numbers from position 41 to 50 etc.

**Example:** *display call users 3*

**Answer:** +359885122112+359885322343+359885431276+359885128734+35988343434  
+359885239854+359885233298+359885120954+359885098765+35988345678

**SMS:** *remove\_call\_users\_<number1><number2><number3><number4><number5>*

**Syntax:** <number1÷5> - mobile number in international format

**Rights:** Master

**Description:** this message is used to remove up to 5 numbers from the Call list

**Example:** *remove call users +359885111111+359885222222+359885333333+359885444444  
+359885555555*

**Answer:** +359885111111+359885222222+359885333333+359885444444+359885555555\_removed

**SMS:** *status\_io*

**Rights:** Master, Users

**Description:** this message is used to request the status of the relay outputs, digital inputs, analog inputs and 1-wire sensors

**Example:** *status io*

**Answer:** R1=ON,R2=OFF,DI1=0,DI2=1,AI1=15.6VDC,AI2=681.3kg,S11=15.8deg,S12=---,  
S21=112.8deg,S22=34.8%RH,S31=---,S32=---,S41=---,S42=---

**SMS:** *status\_system*

**Rights:** Master, Users

**Description:** this message is used to request the system status – Push mode status, signal strength, Firmware version.

**Example:** *status system*

**Answer:** PUSH=OFF,SS=67%,FWver=1.6, Call 12/100,

**SMS:** *status\_<param>*

**Syntax:** possible values of <param> are: di1, di2, ai1, ai2, r1, r2, s11, s12, s21, s22, s31, s32, s41, s42

**Rights:** Master, Users

**Description:** this message is used to request the state/value and description of the selected i/o.

**Example 1:** *status di1*

**Answer:** di1(Garage\_door)=closed

**Example 2:** *status\_s22*

**Answer:** s22(Office\_humidity)=34.5%RH

**SMS:** *set\_<relay>=1*

**Syntax:** possible values of <relay> are: r1, r2.

**Rights:** Master, Users

**Description:** this message is used to switch ON/OFF the selected relay output.

**Example 1:** *set r1=1*

**Answer:** R1=ON,R2=OFF,DI1=0,DI2=1,AI1=15.6VDC,AI2=681.3kg,S11=15.8deg,S12=---,  
S21=112.8deg,S22=34.8%RH,S31=---,S32=---,S41=---,S42=---

**Example 2:** *set r1=0*

**Answer:** R1=OFF,R2=OFF,DI1=0,DI2=1,AI1=15.6VDC,AI2=681.3kg,S11=15.8deg,S12=---,  
S21=112.8deg,S22=34.8%RH,S31=---,S32=---,S41=---,S42=---

**SMS:** *push\_on\_<periode>\_<url>*

**Syntax:** possible values of <periode> are 5÷3600 seconds, <url> is the address of the remote server.

**Rights:** Master

**Description:** this message is used to enable and setup the PUSH mode.

**Example :** *push on 30 www. teracomsystems.com:8801*

**Answer:** PUSH=ON,SS=67%,FWver=1.01

**SMS:** *push\_off*

**Rights:** Master

**Description:** this message is used to disable the PUSH mode.

**Example :** *push off*

**Answer:** PUSH=OFF,SS=67%,FWver=1.01

**SMS:** *restart*

**Rights:** Master

**Description:** this message is used to restart the TCG120 controller.

**Example :** *restart*

**Answer:** Device restarted

**SMS:** *test\_email*

**Rights:** Master

**Description:** this message is used to send test email to the authorized users.

**Example :** *test email*

**Answer:**

**SMS:** *test\_sms*

**Rights:** Master

**Description:** this message is used to send test SMS message to the authorized users.

**Example :** *test sms*

**Answer:**

**SMS:** *update\_<URL>*

**Syntax:** <URL> is URL of the update (.cod) file.

**Rights:** Master

**Description:** this message is used to update the firmware of TCG120 controller via GPRS.

**Example :** *update www. teracomsystems.com/docs/tcg120v1.2.cod*

**Answer 1:** Firmware file downloaded. Updating...

**Answer 2:** Update Not Found!

**Answer 3:** Server Not Found!

**Answer 4:** Download timed out!